





Timeless  
Heritage  
Scandinavian  
Tradition  
Quality  
Design



# About Stelton

*“Together with our talented and carefully selected designers our ambition is to create lasting and functional designs that make everyday life a bit more beautiful.”*

---

Michael Ring, CEO, Stelton

Stelton is a Danish design company with strong roots in the Scandinavian design tradition. Characterized by a minimalist design style and high quality products with outstanding functionality Stelton has managed to capture the hearts of consumers since the late 1960s. With iconic, award-winning designs like the cylinda-line by Arne Jacobsen and the EM77 vacuum jug by Erik Magnussen

Stelton is founded on design classics, while we continue to design for the future. Today, more than 10 million EM77 vacuum jugs have been sold worldwide—proving original design never goes out of fashion.

Together with our talented designers Stelton aspires to inspire design lovers. With a passion for innovation and outstanding design, we collaborate

closely with our designers to create future design classics and icons. The visionary, multiple award-winning Emma and Pure Black collections are perfect examples of this. Encapsulating the Stelton design values, they represent iconic designs with unique functionality making everyday life a bit more beautiful.

We hope you will enjoy the catalogue.



## Stelton has seven different design families

**cylinda-line** by Arne Jacobsen is the heart of Stelton’s design DNA. The iconic minimalist, cylindrical design is a timeless classic.

**classic** is inspired by the cylindrical shape of Arne Jacobsen’s cylinda-line. The classic EM77 vacuum jug by Erik Magnussen is a true bestseller worldwide.

**danish modern 2.0** represents design characterized by clean lines, equal focus on form and function and an innovative mix of high quality materials.

**nordic** is our new, artistic design family inspired by the Nordic landscape and design values.

**explore** brings an architectural touch to the minimalist design style.

**i:cons** features iconic, innovative personal accessories that enrich life on the go.

**norstaal** includes elegant cutlery, serving tools and the award-winning Pure Black kitchen knives.

# STOCKHOLM

*Design by Bernadotte & Kylberg*





*“For us, design is more than colour and form. Our aim is to design products that you will continue to enjoy year after year. Design needs to be inspirational, made of high quality materials and produced in a fair way.”*

—  
Bernadotte & Kylberg

The creative agency Bernadotte & Kylberg was established in 2012 by Carl Philip Bernadotte (born 1979) and Oscar Kylberg (born 1972). The design philosophy of the Swedish design duo is to create iconic and inspiring designs that are made to last. Since it's founding the design duo has worked with a range of well-known interior design and fashion brands bringing their organic and aspirational designs to life.

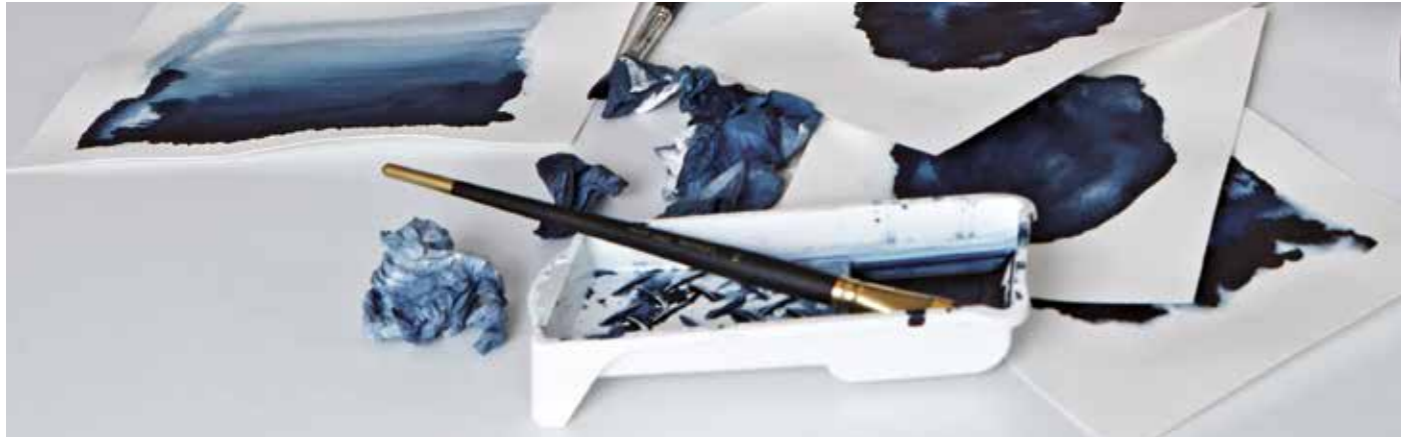
The STOCKHOLM collection is inspired by the Stockholm archipelago and the Baltic Sea. The ever-changing scenery of the sea is an infinite source of inspiration for the collection's artistic expression and its aquatic blue colour palette portrayed by the two distinct patterns: **aquatic** and **horizon**.

The serenity experienced at sea, but also the sea's occasionally dramatic scenery is intensely captured in the **aquatic** design evoking the viewer's senses. With its alternating blue shades and subtle pattern, the **horizon** design

encapsulates the landscape of the Swedish archipelago. Resembling water reflections cast in the quiet waters surrounding the picturesque small islands, the **horizon** design evolves into unique abstract patterns.

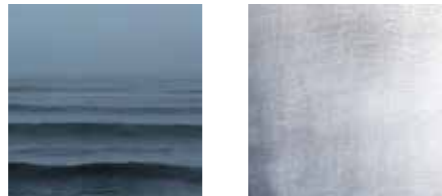
Combining the artistic graphics with the soft, rounded shapes of the vases and bowls STOCKHOLM is a breathtaking centerpiece collection. Using an innovative production technique the graphics are presented in cold enamel on organically shaped aluminum based vases and bowls. Each piece is finished by hand for a perfecting touch giving each item a unique expression. The STOCKHOLM collection includes a range of 4 bowls and 3 vases.

The Stockholm **aquatic** collection is available from March 2015 in selected stores and online at [www.stelton.com](http://www.stelton.com). Stockholm **horizon** will be launched in September 2015.



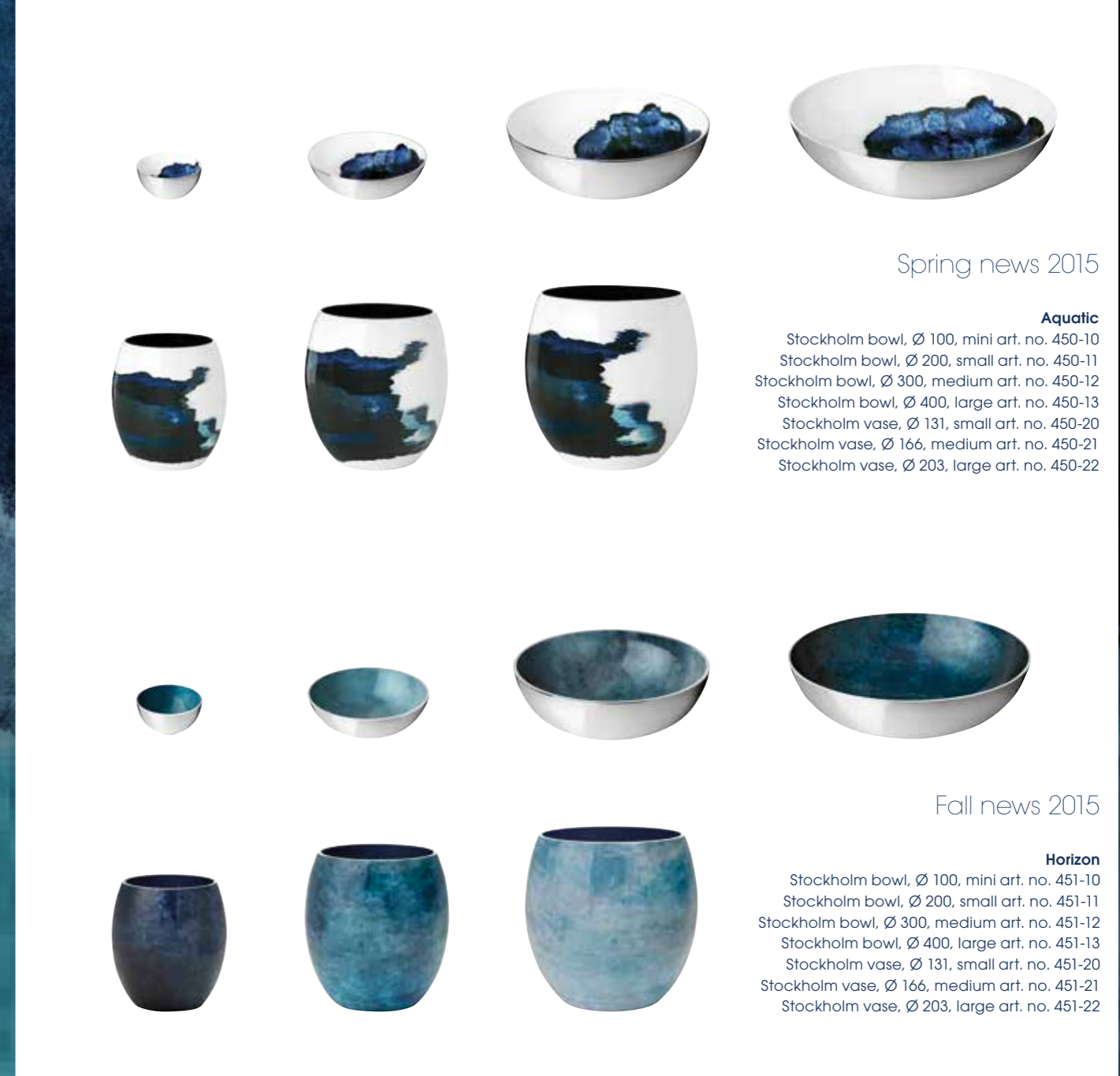
# STOCKHOLM

*Design by Bernadotte & Kylberg*



*“We tried to channel the bold character of the surrounding sea into our design. By working with Indian ink on wet watercolour paper we managed to bring out both the serenity and the dramatic expression of the sea. Combining the eloquent graphics with the soft organic shapes of the vases and bowls we aspired to design centerpieces with a timeless quality. It is a collection of artworks that evokes emotions and enriches life.”*

*– Bernadotte & Kylberg*



## Spring news 2015

### Aquatic

- Stockholm bowl, Ø 100, mini art. no. 450-10
- Stockholm bowl, Ø 200, small art. no. 450-11
- Stockholm bowl, Ø 300, medium art. no. 450-12
- Stockholm bowl, Ø 400, large art. no. 450-13
- Stockholm vase, Ø 131, small art. no. 450-20
- Stockholm vase, Ø 166, medium art. no. 450-21
- Stockholm vase, Ø 203, large art. no. 450-22

## Fall news 2015

### Horizon

- Stockholm bowl, Ø 100, mini art. no. 451-10
- Stockholm bowl, Ø 200, small art. no. 451-11
- Stockholm bowl, Ø 300, medium art. no. 451-12
- Stockholm bowl, Ø 400, large art. no. 451-13
- Stockholm vase, Ø 131, small art. no. 451-20
- Stockholm vase, Ø 166, medium art. no. 451-21
- Stockholm vase, Ø 203, large art. no. 451-22

The award-winning cylinda-line collection has survived the test of time. Designed by Arne Jacobsen in the 1960s the collection still looks striking on the coffee table today. Cylinda-line is a true statement collection that represents Danish minimalism and timeless elegance. Now and forever.

Cylinda-line has been recognised with the ID-prize 1967 by The Danish Society of Industrial Design and The International Design Award 1968 by The American Institute of Interior Designers.

AJ creamer art. no. 06-2  
 AJ sugar bowl art. no. 06-3  
 AJ French press 1 l art. no. 01-3  
 AJ jug with icelip 2 l art. no. 03-3  
 AJ tea pot 1.25 l art. no. 04-2  
 AJ serving tray art. no. 014-2

see the complete cylinda-line on page 54

## Untouched by time

cylinda-line by Arne Jacobsen







AJ salad bowl art. no. 022-1  
AJ salad servers art. no. 023-1

see the complete cylinda-line on page 54



***“The primary factor is proportions. Next comes the material – not mixing the wrong materials. And out of this comes, of course, the colour – and, in sum, the overall impression.”***

---

Arne Jacobsen, 1968

Arne Jacobsen (1902–1971) is one of the most acknowledged Danish architects and designers worldwide. With an astounding curiosity, originality and creativity Arne Jacobsen played an important role in modernism and the Danish design history and present-day designers are still highly influenced by his work.

With an educational background within architecture at the Royal Danish Academy of Fine Arts Arne Jacobsen had an extraordinary understanding of proportion that he applied to his designs. With a keen eye for details, he undertook architectural projects that included all elements of interior design, creating visionary and fully coherent concepts.

Most of his famous furniture like the Ant, the Swan, the Egg, Series 7 and lamp designs were originally created for architectural projects. Arne Jacobsen designed the award-winning cocktail and tableware series cylinda-line for Stelton in 1967 that has become the essence of Stelton’s design DNA.

# EM77

by Erik Magnussen

Erik Magnussen created the iconic vacuum jug with the unique rocker stopper in 1977. Today it is still as trendy and timeless as ever.

The iconic EM77 vacuum jug remains one of Stelton's best-selling designs. This season the blue and green trend colours are inspired by the fragrant Scandinavian pine woods, the quiet forest lakes and Scandinavia's roaring blue waters.

The design is acknowledged by no less than 3 highly coveted awards: the Danish Design award 2007 for most classic product, the iF design award 1992 and the ID award 1977.

The EM77 is available in two sizes—1 L and 0.5 L in selected colours. The vacuum jug comes with two lids; the patented rocker stopper that allows for one hand serving and a screw cap for transportation. For tea lovers a matching tea strainer is sold separately.



EM mug 2 pcs. art. no. 775  
 EM77 vacuum jug 1l - moss green art. no. 993  
 EM77 vacuum jug 1l - river blue art. no. 992  
 EM77 vacuum jug 1l - baltic blue art. no. 994

see all the EM77 colours on page 56



## EM French Press

Designed for Stelton in 1977, the prize-winning vacuum jug by Erik Magnussen is also available as a French press coffee maker in five different colours—stainless steel, black, white, lime and red. The French press brews up to 8 cups in one go. Its double walls and simple open and close function keep the coffee hot for a long time. Matching sugar bowl and creamer are sold separately.



EM French press coffee maker 1 l - stainless steel art. no 810

EM creamer 0.25 l - steel art. no. 1000

EM sugar bowl 0.3 l - steel art. no. 1100

EM milk jug 0.5 l art. no. 1230



## Erik Magnussen

Erik Magnussen (1940–2014) was one of Denmark's most accomplished designers. Educated as a ceramist at the School of Applied Arts and Design, he graduated with a silver medal in 1960. For a number of years Erik Magnussen worked for the porcelain manufacturer Bing & Grøndahl, his designs also include popular furniture designs for Paustian and Fritz Hansen.

When designing Erik Magnussen always worked to find the optimal balance between aesthetics, functionality, production technology and environmental considerations. He preferred creating prototypes by hand

as he found that great design only came from using the senses intensely. In this way he also ensured that the final product designs would be equally functional and beautiful.

His designs for Stelton are part of the core design DNA of the brand, merging perfect form with perfect functionality. The bird like, graphic expression of the EM77 vacuum jug teases the senses and is an immediate attention grabber.

The design has become a classic icon in Danish households and more than 10 million jugs have been sold

worldwide. In addition, the jug's automatic open and close function was a pure stroke of genius facilitating a perfect one hand serving.

Erik Magnussen's designs are exhibited in museums worldwide. Among many prizes Erik Magnussen received the Lunning Prize in 1967 and the Furniture Prize in 1977. In 1983 he was chosen »Designer of the Year« by the Danish Design Council.

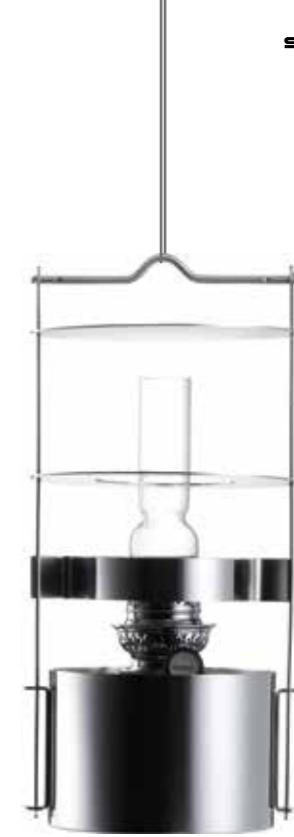
# A beacon of light

by Erik Magnussen



- EM ship's lamp, 43 x 27 cm art. no. 1001
- EM ship's lamp, 34 x 15 cm art. no. 1004
- EM oil lamp, frosted glass, 23.5 x 13 cm art. no. 1008
- EM oil lamp, clear glass, 18 x 8.5 cm art. no. 1005
- EM oil lamp - copper, clear glass, 18 x 8.5 cm art. no. 1005-1
- EM oil lamp, frosted glass, 18 x 8.5 cm art. no. 1006

Perfect for  
cosy evenings in  
the garden, on  
the balcony or  
on the boat.



## A morning favorite

Try out the bestselling bread bag by Klaus Rath. The bag has magnets for easy storage and keeps the breakfast buns fresh and warm.



Bread bag, large - blue line art. no. 1350-14  
 Bread bag, large - blue art. no. 1350-16  
 Bread bag, large - moss green art. no. 1350-17

see all the bread bags on page 57



## A perfect match

The EM jug for juice and water designed by Erik Magnussen is inspired by EM77. The jug also displays same high level of functionality, as it comes with a smart ice cube stopper. The Simply glasses by Klaus Rath are available in the same blue shade—they are a perfect match.



EM jug with lid 1.5 l. - blue art. no. 1310  
 Simply glass 4 pcs. - blue art. no. 701-2-1

see more colours on page 57

# Bar accessories

Keep your wine cool and enjoy the stylish bar accessories.



EM wine cooler by Erik Magnussen art. no. 483  
Original cork screw by Peter Holmblad art. no. 522  
Original bottle opener by Peter Holmblad art. no. 521  
Original cheese/bar knife by Peter Holmblad art. no. 523



# Classic tableware

Stylish tools for comfort food. Functional, decorative and easy to clean.



Slice & Serve pizza slicer by Klaus Rath art. no. 464  
Original napkin holder by Peter Holmblad, 19 x 19 cm art. no. 486  
EM cake knife/spade by Erik Magnussen art. no. 460  
Original cheese slicer by Peter Holmblad art. no. 527



# To a T

The T pot and T cups are designed by Knud Holscher. Inspired by the Bauhaus period the functionality of the design is a key priority. With an integrated tea strainer and tealight holder your tea will stay warm for longer. This T-set embraces time-honoured tea-drinking traditions.



**T designed by Knud Holscher**  
T jug 1.5 l art. no. 860  
T mug, 2 pcs. art. no. 861

# Korona tray by Jehs & Laub

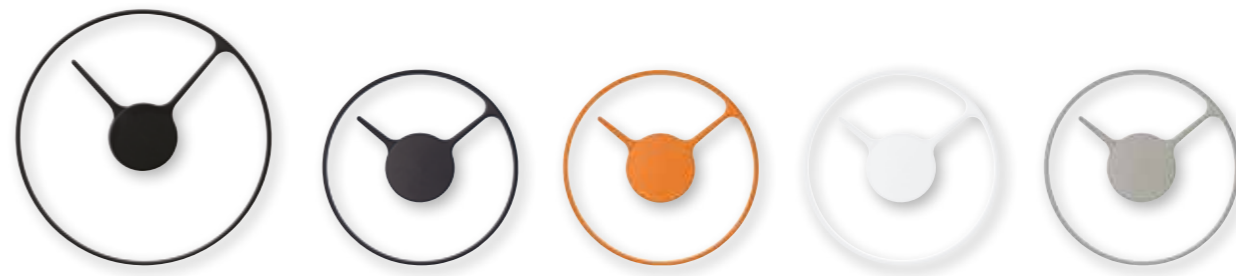


Korona tray by Jehs & Laub art. no. 594



# Stelton Time

Time has become a complex phenomenon, but your wall clock does not have to be. The iconic sculptural wall clock from Stelton, designed by the German duo, Jehs & Laub, is now launched in a medium sized version in 4 colours. The unique, graphical look and the absence of traditional clock casing create the illusion of Time floating in thin air. The clock's minute arm forms the clock's face and casts an architectural shadow on the wall.



## Wall clock designed by Jehs & Laub

Stelton Time wall clock, 30 cm, large - black art. no. 851  
 Stelton Time wall clock, 22 cm, medium - black art. no. 852  
 Stelton Time wall clock, 22 cm, medium - orange art. no. 852-3  
 Stelton Time wall clock, 22 cm, medium - white art. no. 852-1  
 Stelton Time wall clock, 22 cm, medium - grey art. no. 852-2



# The EMMA collection

Modern design with excellent functionality, the Emma collection has won several design awards already. The collection beautifies everyday life with its enticing tea and coffee vacuum jugs, mugs, breakfast bowls, sugar bowl and milk jug in matching tone-on-tone shades of blue or grey.

The clean lines and innovative combinations of materials such as steel, wood and stoneware characterize the Emma collection. The tea vacuum jug has a smart integrated tea-filter. With a single twist on the top of the tea jug, the tea will stop brewing, so your tea will never get bitter again.

The Emma collection is designed by HolmbäckNordentoft and has won the following design awards: the iF Product Design Award 2014, the Red Dot Design Award 2014 and a Special mention at the German Design Award 2015.



# Let Theo awaken your senses

East meets west in the Theo collection by Francis Cayouette. The designer merges the best from Asian tea culture with Danish design values creating a design that is graphical, tactile and full of contrasts. Created of blackish Scandinavian stoneware with an Asian cast-iron finish and smooth bamboo, the Theo collection will awaken your senses.



**Theo by Francis Cayouette**

Theo teapot, 1,25 l art. no. x-630

Theo teapot warmer art. no. x-631

Theo mug with coaster, 1 pcs art. no. x-632

Theo mini-bowl, 3 pcs art. no. x-633

# Alluring metals

Spread cheer in your home with the Reflection candleholders. The slender, organic and feminine candleholders are designed by the industrial designers Halskov & Dalsgaard. In two complementing heights, they can create a sea of light when several candleholders are clustered together. Due to an ingenious, invisible fingerprint resistant coating, the candleholders keep their shiny finish and do not require polishing. Both sizes are available with copper, brass or mirror finish.

The organic design of Aura reflects the warm light of the candle back into the room creating a cosy atmosphere. Alternatively, place a few of them asymmetrically in the hallway for a chic, stylish look.

The sculptural jug Freja is a contemporary take on the classic Danish steel jugs of the 1950s. The basket weave handle made of sun-dried bast creates a beautiful contrast to the steel.

## **Reflection by Halskov & Dalsgaard**

Reflection candleholder, 23 cm - copper art. no. x-300-1  
 Reflection candleholder, 17 cm - copper art. no. x-301-1  
 Reflection candleholder, 23 cm - mirror art. no. x-300-2  
 Reflection candleholder, 17 cm - mirror art. no. x-301-2  
 Reflection candleholder, 23 cm - brass art. no. x-300-3  
 Reflection candleholder, 17 cm - brass art. no. x-301-3

## **Aura by HolmbäckNordentoft**

Aura wall candleholder art. no. x-250

## **Freja by Klaus Rath**

Freja jug, 2 l art. no. x-400



# Infinite curves

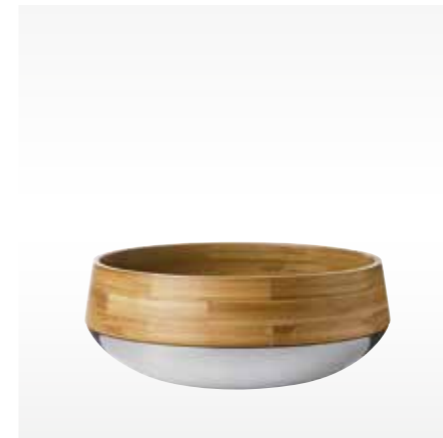


Kontra servingbowl by Maria Berntsen art. no. x-96-3  
Papilio Uno candleholder - stainless steel by Klaus Rath art. no. x-39  
Twilight candleholder by Steve McGugan large art. no. x-19 / small art. no. x-18  
Kontra vacuum jug 1.0 l. by Troels Seidenfaden art. no. x-180





Inspired  
by Nature



Glacier ice bucket by Niels Kjeldsen art. no. 320

Glacier wine cooler by Niels Kjeldsen art. no. 321

Flow carafe 1 l. by Klaus Rath art. no. x-190

Forest kitchen roll holder by Klaus Rath art. no. x-172

Forest salt mill by Klaus Rath art. no. x-171-1

Forest pepper mill by Klaus Rath art. no. x-171-2

Kontra fruit-/salad bowl by Maria Berntsen art. no. x-96-1

Reflection tray by Halskov & Dalgaard art. no. x-37

## Seductive curves

Embrace the bestselling design by Halskov & Dalsgaard. The organic, distinctive Embrace collection has become one of Stelton's most popular designs. The range beautifies everyday life with its assortment of bowls, vases, bread trays and tealight holders.



- Embrace by Halskov & Dalsgaard**  
 vase, small art. no. x-25  
 fruit bowl art. no. x-28  
 tealight holder, 2 pcs art. no. x-29-2  
 bread tray - black art. no. x-28-3  
 bread tray - blue-grey art. no. x-28-3-5  
 bread tray - moss green art. no. x-28-3-6

see all colours on page 59



Tangle vase by Halskov & Dalsgaard - magnum art. no. x-56-2  
Tangle vase by Halskov & Dalsgaard - medium art. no. x-56  
Tangle dish by Halskov & Dalsgaard art. no. x-57  
Papilio Uno candleholder by Klaus Rath - copper art. no. x-39-2

# Tangled elegance

Let the glow of copper shine in your home with Papilio Uno and the Tangle collection. The Tangle vases add a touch of luxury to the home décor, the copper-coated intertwined ribbons sparkle with quality, grace and style. The Tangle collection also includes a beautiful dish for fruits or snacks.

Papilio Uno is available in stainless steel, brass and copper.





## On the go

Perfect for your favorite drink on the go.

Try the double walled To Go Click travel mug for your hot beverages and To Go Water for your cool refreshments.

Click the lid to open and enjoy.

The click-top lid helps prevent spills. BPA free and phthalate free



**To GoClick by Stelton**  
see art. no. on page 62

**To Go Water by Niels Kjeldsen**  
see art. no. on page 62



## Sharp design for the kitchen

Stelton's popular Pure Black knife range is known for its stringent, stylish look and first-rate functionality.

Forged from a single piece of stainless chromium steel the handle of the knife morphs seamlessly into the blade. The graphic expression of the Pure White magnetic knife holder is the perfect platform for the Pure Black knives.

The Pure Black collection by HolmbäckNordentoft has won several international design awards e.g. the Red Dot Design Award—Best of the Best 2011, Formland Design Award 2011, Accent on Design Award 2011.



### HolmbäckNordentoft

The design duo Sebastian Holmbäck (born 1971) and Ulrik Nordentoft (born 1974) met at the Danish Design School and has since designed many of Stelton's most popular collections like Emma, Pure Black, Stella and Aura.

The design philosophy of HolmbäckNordentoft is to create timeless designs that evoke emotions and excitement. Characterized by outstanding functionality their designs bring joy to everyday life.

HolmbäckNordentoft has won many prestigious design awards for Pure Black and Emma.

**Pure Black by HolmbäckNordentoft**  
see art. no on page 63

**EM French press by Erik Magnussen**  
see art. no. on page 56



## Prisme

by Dahlerup & Holbek

Prisme is a very iconic set of cutlery;  
the handle on the cutlery mirrors the shape of a prism.

Prisme cutlery set, 16 pcs. art. no. C-22-16  
Prisme cutlery set, 24 pcs. art. no. C-22-24



## EM

by Erik Magnussen

Sleek, minimalist design at its best. The satin-polished stainless steel has a slight  
concave curve. The EM cutlery is a symbiosis of design and functionality.

EM cutlery set, 16 pcs. art. no. C-16-16  
EM cutlery set, 24 pcs. art. no. C-16-24

## Maya and Maya 2000

Designed by Tias Eckhoff the Maya cutlery has over time become a design icon.

Included in the Phaidon design classics among the best designs in the world and exhibited at MoMA in New York and the Victoria Albert Museum in London, Maya is the epitome of timeless elegance.

Maya 2000 is longer and slimmer than the original Maya design. Its triangular form appears even more streamlined and fits the most modern table setting.

Maya cutlery set, 16 pcs. art. no. C-2-16  
Maya cutlery set, 24 pcs. art. no. C-2-24  
Maya 2000 cutlery set, 16 pcs. art. no. C-18-16  
Maya 2000 cutlery set, 24 pcs. art. no. C-18-24



## Chaco by Tias Eckhoff

Sleek and attractive cutlery. Choose Chaco for its understated elegance.



## Una by Tias Eckhoff

The collection's slender rounded form and drop-shaped handle ensures a good grip.



## Tiki by Tias Eckhoff

Acknowledged for its dramatic contrast between a rectangular and soft-rounded shape, Tiki has become a timeless classic.



## Tias Eckhoff

Tias Eckhoff (born 1926) is one of Norway's most versatile designers. He is a pioneer within industrial design and has contributed to making Scandinavian design a notion worldwide.

Tias Eckhoff graduated in 1945 from the Norwegian State College of Applied Arts and Crafts with a degree in ceramic arts. Driven by a strong passion for elegant cutlery Tias Eckhoff has designed Maya, Maya 2000, Chaco, Una and Tiki for Stelton Norstaal.

Maya has received recognition as one of the best cutlery designs worldwide.

Chaco cutlery set 16 pcs. art. no. C-4-16  
Chaco cutlery set 24 pcs. art. no. C-4-24  
Una cutlery set, 4 pcs. art. no. C-5  
Una cutlery set, 16 pcs. art. no. C-6  
Tiki cutlery set, 4 pcs. art. no. C-13



## Aztec by Don Wallance

Thin, delicate shafts with carefully rounded edges give the cutlery an airy lightness.

Aztec cutlery set, 16 pcs. art. no. C-10-16  
Aztec cutlery set, 24 pcs. art. no. C-10-24



## Magnum by Don Wallance

Generous concave curves and elliptic handles give the cutlery a beautiful silhouette when laid out on the table.



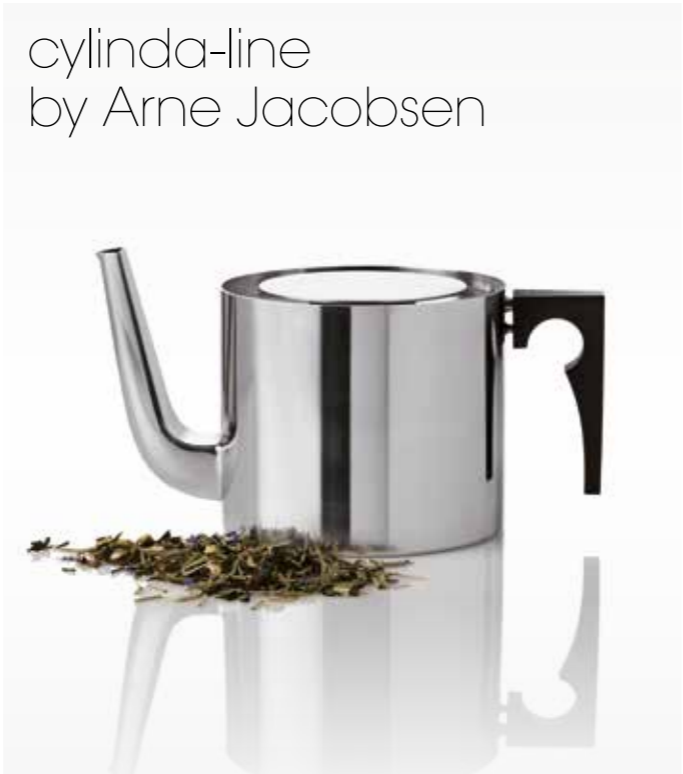
## Capelano by Johan Verde

Slim and elegant, Capelano's twisting design has often been copied, but this remains the original.



Magnum dinner fork art. no. 13209  
Magnum dinner spoon art. no. 13109  
Magnum dinner knife art. no. 30509  
Magnum coffee-/tea spoon art. no. 14509  
Capelano dinner fork art. no. 13260  
Capelano dinner spoon art. no. 13160  
Capelano dinner knife art. no. 30560  
Capelano coffee-/tea spoon art. no. 14560

cylinda-line  
by Arne Jacobsen




AJ French press 1 l  
Art. no. 01-3



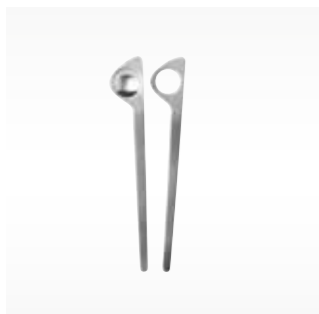
AJ coffee pot 1.5 l  
Art. no. 01-2



AJ sugar bowl  
art. no. 06-3



AJ creamer 0.15 l  
art. no. 06-2



AJ salad servers  
art. no. 023-1



AJ salad bowl  
art. no. 022-1



AJ salt mill / pepper mill  
art. no. 017-3 / no. 017-1



AJ salt & pepper set  
art. no. 010-1



AJ cocktail shaker 0.75 l  
art. no. 016-1



AJ ice bucket 2.5 l  
art. no. 05-2



AJ ice bucket 1 l  
art. no. 05-1



AJ martini mixer with mixer spoon 1 l  
art. no. 020-1



AJ serving tray  
art. no. 014-2



AJ ice tongs  
art. no. 015-1



AJ set of 6 glass coasters  
art. no. 019-1



AJ jug with icelip 2 l  
art. no. 03-3



AJ revolving ashtray 7.5 cm - small  
art. no. 09-1



AJ revolving ashtray 10 cm - large  
art. no. 09-2

classic



EM77 vacuum jug 1 l - steel  
art. no. 900



EM77 vacuum jug 1 l - copper  
art. no. 900-2



EM77 vacuum jug 1 l - brass  
art. no. 900-3



EM77 vacuum jug 1 l - mirror  
art. no. 900-4



EM77 vacuum jug 1 l - soft black  
art. no. 931



EM77 vacuum jug 1 l - red  
art. no. 920



EM77 vacuum jug 1 l - black  
art. no. 930



EM77 vacuum jug 1 l - white  
art. no. 960



EM77 vacuum jug 1 l - granite  
art. no. 991



EM77 vacuum jug 1 l - lime  
art. no. 979



EM77 vacuum jug 1 l - saffron  
art. no. 950



EM77 vacuum jug 1 l - chalk  
art. no. 978



EM77 vacuum jug 1 l - sand  
art. no. 989



EM77 vacuum jug 1 l - copper brown  
art. no. 988



EM77 vacuum jug 1 l - river blue  
art. no. 992



EM77 vacuum jug 1 l - moss green  
art. no. 993



EM77 vacuum jug 1 l - baltic blue  
art. no. 994



EM77 vacuum jug 0.5 l - black  
art. no. 935



EM77 vacuum jug 0.5 l - white  
art. no. 965



EM77 vacuum jug 0.5 l - steel  
art. no. 915



EM sugar / milk - black  
art. no. 1130 / 1030



EM sugar / milk - steel  
art. no. 1100 / 1000



Tea strainer for EM77  
art. no. 999



EM French press 1 l - steel  
art. no. 810



EM French press 1 l - white  
art. no. 811



EM French press 1 l - black  
art. no. 812



EM French press 1 l - red  
art. no. 813



EM French press 1 l - lime  
art. no. 815



EM milk jug 0.5 l - white  
art. no. 1230



Em mug 2 pcs - white  
art. no. 775



Circle mug 2 pcs - white  
art. no. 770-4



Circle mug 2 pcs - cloud  
art. no. 770-5



Circle mug 2 pcs - ocean  
art. no. 770-6



Circle mug 2 pcs - copper brown  
art. no. 770-7



EM water filter jug 2 l - smoke  
art. no. 1310-10



EM jug with lid 1.5 l - blue  
art. no. 1310



Simply glass 4 pcs - blue  
art. no. 701-2-1



Simply glass 4 pcs - green  
art. no. 701-2-2



Simply glass 4 pcs - pink  
art. no. 701-2-3



Simply glass 4 pcs - grey  
art. no. 701-2-4



Bread bag large - pale blue/blue  
art. no. 1350-16



Bread bag large - pale green/moss green  
art. no. 1350-17



Bread bag large - grey/white  
art. no. 1350-15



Bread bag large - black/sand  
art. no. 1322



Bread bag large - sand/white  
art. no. 1323



Bread bag large - pink line  
art. no. 1350-12



Bread bag large - mint line  
art. no. 1350-13



Bread bag large - blue line  
art. no. 1350-14



Bread bag large - pistachio  
art. no. 1316



Bread bag large - purple  
art. no. 1305



Bread bag large - lime  
art. no. 1350-7



Bread bag large - black  
art. no. 1320



Bread bag medium - aqua/white  
art. no. 1360-4



Bread bag medium - navy/white  
art. no. 1360-5



Bread bag medium - pistachio  
art. no. 1360-3



Bread bag small 2 pcs - maasai-blue  
art. no. 1332



Bread bag small 2 pcs - maasai-aubergine  
art. no. 1333



EM ship's lamp  
large  
art. no. 1001



EM ship's lamp  
small  
art. no. 1004



EM oil lamp  
clear glass  
art. no. 1005



EM oil lamp  
clear glass - copper  
art. no. 1005-1



EM oil lamp  
frosted glass  
art. no. 1006



EM oil lamp  
large frosted glass  
art. no. 1008



Frost ice bucket  
art. no. 500



Frost carafe 0.75l  
art. no. 501



Frost glass no. 1 - 2 pcs.  
art. no. 502



Frost glass no. 2 - 2 pcs.  
art. no. 503



EM wine cooler  
art. no. 483



Original cork screw  
art. no. 522



Original bottle opener  
art. no. 521



Original cheese/bar knife  
art. no. 523



Original cheese slicer  
art. no. 527



Original napkin holder  
19x19 cm  
art. no. 486



EM cake knife/spade  
art. no. 460



Korona tray  
art. no. 594



T jug 1.5l  
art. no. 860



T mug 2 pcs.  
art. no. 861



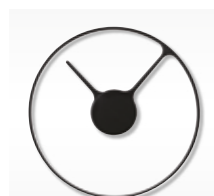
Stella bowl  
art. no. 660



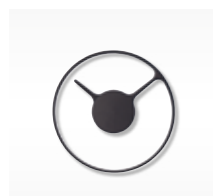
Stella tealight 2 pcs.  
art. no. 662



Stella vase  
art. no. 663



Stelton Time wall clock  
large - black  
art. no. 851



Stelton Time wall clock  
medium - black  
art. no. 852



Stelton Time wall clock  
medium - grey  
art. no. 852-2



Stelton Time wall clock  
medium - white  
art. no. 852-1



Stelton Time wall clock  
medium - orange  
art. no. 852-3

## explore



Tangle dish  
art. no. x-57



Tangle vase medium  
art. no. x-56



Tangle vase magnum  
art. no. x-56-2



Embrace fruit bowl large  
art. no. x-28



Embrace fruit bowl small  
art. no. x-28-1



Embrace bread tray  
blue-grey  
art. no. x-28-3-5



Embrace bread tray  
moss green  
art. no. x-28-3-6



Embrace bread tray  
marine blue  
art. no. x-28-3-7



Embrace bread tray  
black  
art. no. x-28-3



Embrace bread tray  
chalk  
art. no. x-28-3-1



Embrace bread tray  
cloud  
art. no. x-28-3-3



Embrace bread tray  
lime  
art. no. x-28-3-2



Embrace vase small  
art. no. x-25



Embrace vase mini  
art. no. x-27



Embrace tealight holder 2 pcs  
art. no. x-29-2



Slice & Serve - pizza  
art. no. 464



Flap tablet-holder  
art. no. x-1



Take away serving tray  
art. no. x-8

# danish modern 2.0



Glacier ice bucket  
art. no. 320



Glacier wine cooler  
art. no. 321



Flow carafe 1 l  
art. no. x-190



Emma vacuum jug coffee  
1.2l - blue  
art. no. x-200



Emma vacuum jug tea 1 l  
blue  
art. no. x-201



Emma milk jug thermo 0.3 l  
blue  
art. no. x-203



Emma sugar bowl  
blue  
art. no. x-205



Emma thermo cup 2 pcs  
blue  
art. no. x-204



Emma bowl 2 pcs  
blue  
art. no. x-206



Emma vacuum jug coffee  
1.2l - grey  
art. no. x-200-1



Emma vacuum jug tea 1 l  
grey  
art. no. x-201-1



Emma milk jug thermo 0.3 l  
grey  
art. no. x-203-1



Emma sugar bowl  
grey  
art. no. x-205-1



Emma thermo cup 2 pcs  
grey  
art. no. x-204-1



Emma serving tray  
art. no. x-202



Theo teapot 1.25 l  
art. no. x-630



Theo teapot warmer  
art. no. x-631



Theo cop with coaster  
art. no. x-632



Theo mini bowls 3 pcs  
art. no. x-633



Aura wall candleholder  
art. no. x-250



Freja jug 2 l  
art. no. x-400



Kontra vacuum jug 1 l  
art. no. x-180



Kontra fruit-/salad bowl  
art. no. x-96-1



Kontra serving bowl  
art. no. x-96-3



Forest kitchen roll holder  
art. no. x-172



Forest salt mill / pepper mill  
art. no. x-171-1 / x-171-2



Reflection tray  
art. no. x-37



Reflection candleholder  
large - mirror  
art. no. x-300-2



Reflection candleholder  
medium - mirror  
art. no. x-301-2



Reflection candleholder  
large - copper  
art. no. x-300-1



Reflection candleholder  
medium - copper  
art. no. x-301-1



Reflection candleholder  
large - brass  
art. no. x-300-3



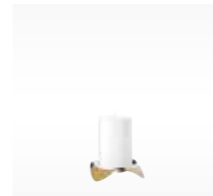
Reflection candleholder  
medium - brass  
art. no. x-301-3



Papilio Uno candle holder  
mirror  
art. no. x-39



Papilio Uno candle holder  
copper  
art. no. x-39-2



Papilio Uno candle holder  
brass  
art. no. x-39-3



Twilight candleholder  
small  
art. no. x-18



Twilight candleholder  
large  
art. no. x-19

# nordic



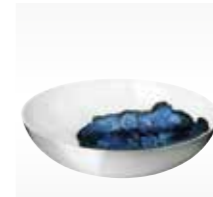
Stockholm bowl  
mini - aquatic  
art. no. 450-10



Stockholm bowl  
small - aquatic  
art. no. 450-11



Stockholm bowl  
medium - aquatic  
art. no. 450-12



Stockholm bowl  
large - aquatic  
art. no. 450-13



Stockholm vase  
small - aquatic  
art. no. 450-20



Stockholm vase  
medium - aquatic  
art. no. 450-21



Stockholm vase  
large - aquatic  
art. no. 450-22



i:cons



Credit card holder  
art. no. 213



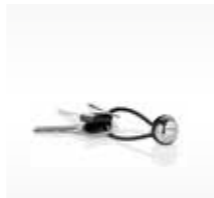
Business card holder  
art. no. 212



Luggage tag  
art. no. 214



Pill box  
art. no. 217



My keychain  
art. no. 602



Ice away  
art. no. x-93



P-ring parking disc  
art. no. 3101



Parking disc  
art. no. 3100



To Go Water 0.75 l - mint  
art. no. 604-3



To Go Water 0.75 l - coral  
art. no. 604-4



To Go Water 0.75 l - aqua  
art. no. 604-2



To Go Water 0.75 l - black  
art. no. 604-1



To Go Click 0.34 l - steel black  
art. no. 580-1



To Go Click 0.20 l - steel black  
art. no. 570-1



To Go Click 0.34 l - steel  
art. no. 580



To Go Click 0.20 l - steel  
art. no. 570



To Go Click 0.34 l  
steel moss green  
art. no. 580-2



To Go Click 0.20 l  
steel moss green  
art. no. 570-2



To Go Click 0.34 l - steel chalk  
art. no. 580-3



To Go Click 0.20 l - steel chalk  
art. no. 570-3



Shopper - purple  
art. no. 1600-7



Shopper - pistachio  
art. no. 1600-8



Shopper - mint  
art. no. 1600-11



Shopper - pink  
art. no. 1600-12



Shopper - light blue  
art. no. 1600-13



Shopper statement - black  
art. no. 1600-2



Shopper NO Plastic - pink  
art. no. 1600-14



Shopper NO Plastic - black  
art. no. 1600-15



Shopper NO Plastic - pistachio  
art. no. 1600-16

norstaal



EM cutlery  
art. no. C-15/C-16/C-16-24



Em salad- & serving set  
art. no. 532



Chaco cutlery  
art. no. C-3/C-4-16/C-24



Chaco salad- & serving set  
art. no. 18905



Chaco sauce ladle  
art. no. 14305



Aztec cutlery  
art. no. C-9/C-10-16/C-10-24



Maya cutlery  
art. no. C-1/C-2-16/C-2-24



Maya 2000 cutlery  
art. no. C-17/C-18-16/C-18-24



Maya salad- & serving set  
art. no. 18902



Maya serving set  
art. no. 12102



Maya sauce ladle  
art. no. 14302



Capelano cutlery  
see art. no. on page 53



Magnum cutlery  
see art. no. on page 53



Tiki cutlery  
art. no. C-13



Una cutlery  
art. no. C-5/C-6



Penguin childrens cutlery  
art. no. C-23-1 pink / C23-2 blue



Prisme cutlery  
art. no. C-22-16/C-22-24



Ribbon salad servers  
art. no. 533



Pure Black  
art. no. x-120-... -5 utility knife / -4 santuko knife /  
-2 chef's knife - small / -1 chef's knife - large / -3 bread knife / x-120 knife holder



Pure Black boning knife  
art. no. x-120-6



Pure Black carving fork  
art. no. x-120-7



