

Extra Large

Designed Luciano Bertoncini

Kristalia presents these large rectangular mirrors, which can be positioned horizontally or vertically to add more depth, charm and light to home areas, commercial areas and contract furnishing areas. Its large mirror surface is recessed in relation to its simple geometric frame in drawn anodized aluminium, providing an additional perspective effect. The free-standing version on castors is ideal for continuous use, in a wide range of spaces in the home or in a showroom.

Structure finish:

Anodized aluminium

Aluminium painted white Ral 9010 semi-matt

Wall mounted

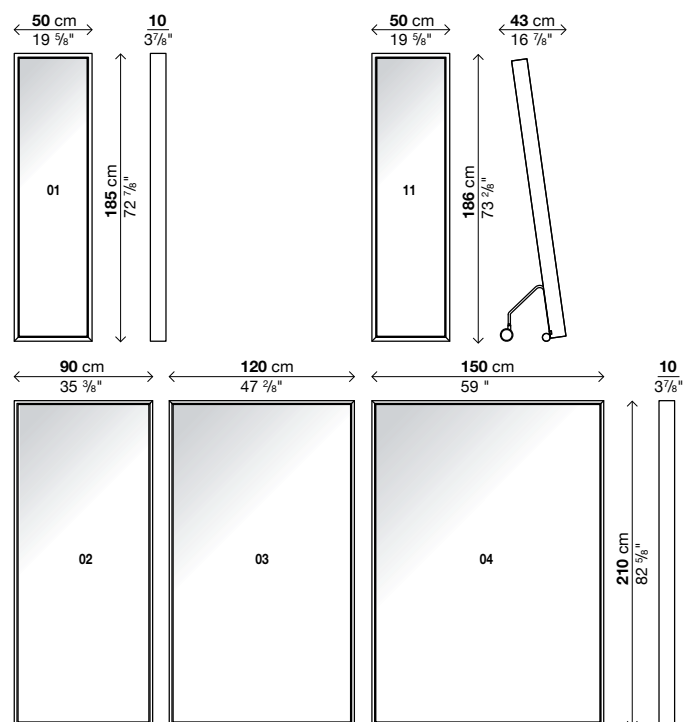
Code	Measures (cm.)	Structure finish	Vol.
20EXL01	50 x 185 x 10	aluminium	0.21
		white lacquer	
20EXL02	90 x 210 x 10	aluminium	0.34
		white lacquer	
20EXL03	120 x 210 x 10	aluminium	0.44
		white lacquer	
20EXL04	150 x 210 x 10	aluminium	0.54
		white lacquer	

Nr. packages 1

Free standing on wheels

Code	Measures (cm.)	Structure finish	Vol.
20EXL11	50 x 186 x 43	aluminium	0.21
		white lacquer	

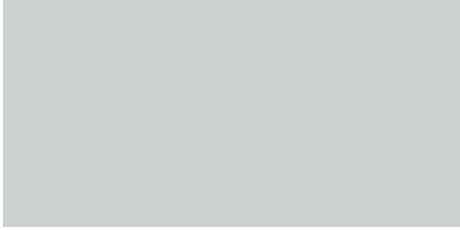
Nr. packages 1



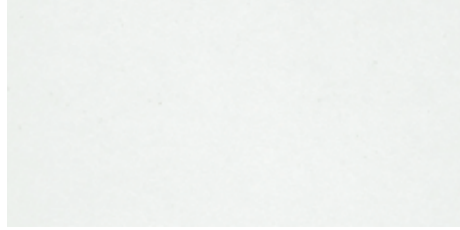
Finishes

Finiture metallo

Metal finish / Metallausführungen / Acabados metal / Finitions métal



Alluminio anodizzato / Anodised aluminium / Eloxiertes Aluminium / Aluminio anodizado / Aluminium anodisé



RAL 9010 Verniciato bianco / Painted white / Weiss lackiert / Pintado blanco / Peint blanc