

Kartell

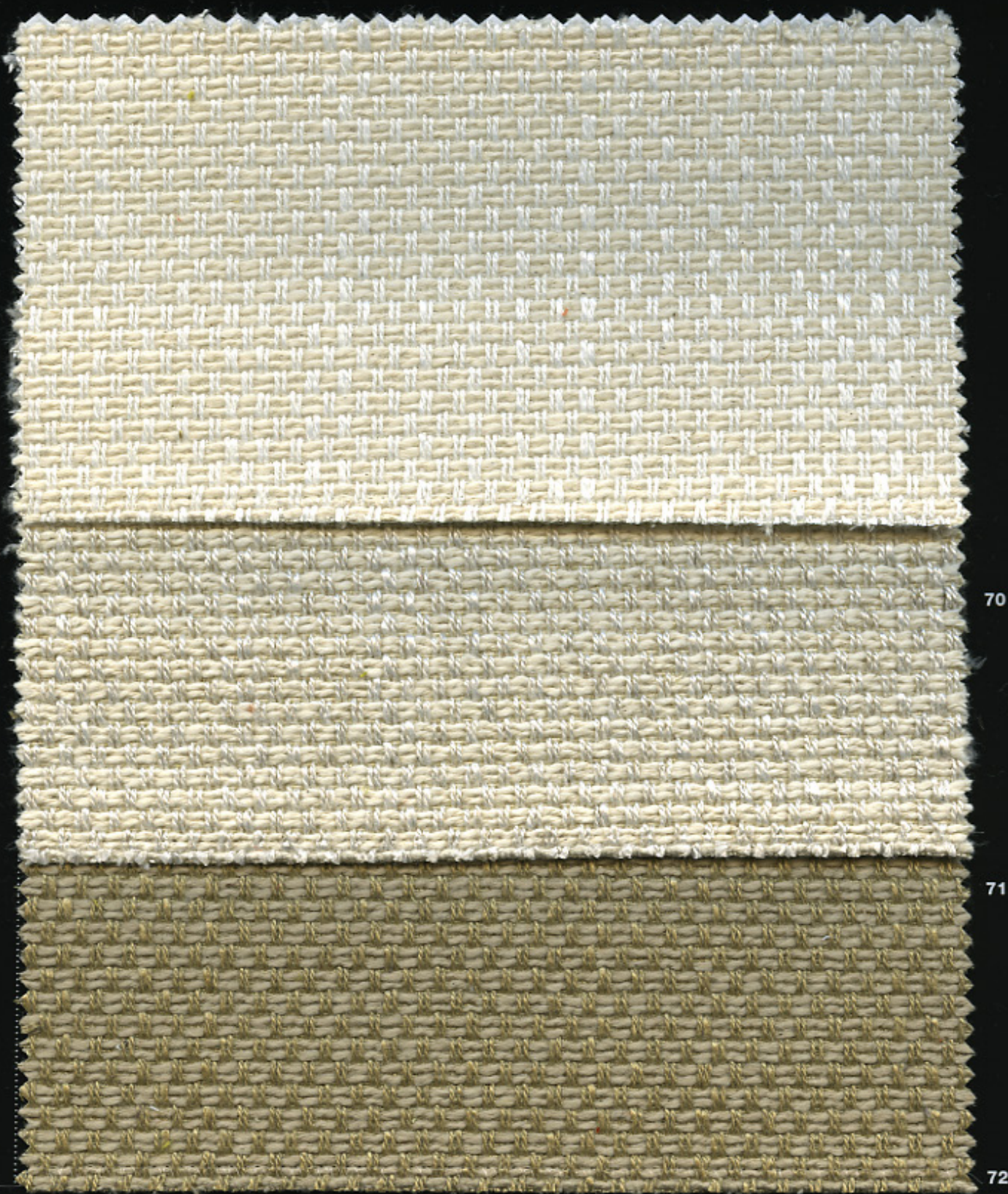
POP DUO
PLASTICS DUO

design Piero Lissoni

NILO FABRICS

POP DUO & PLASTICS DUO

NILO FABRICS

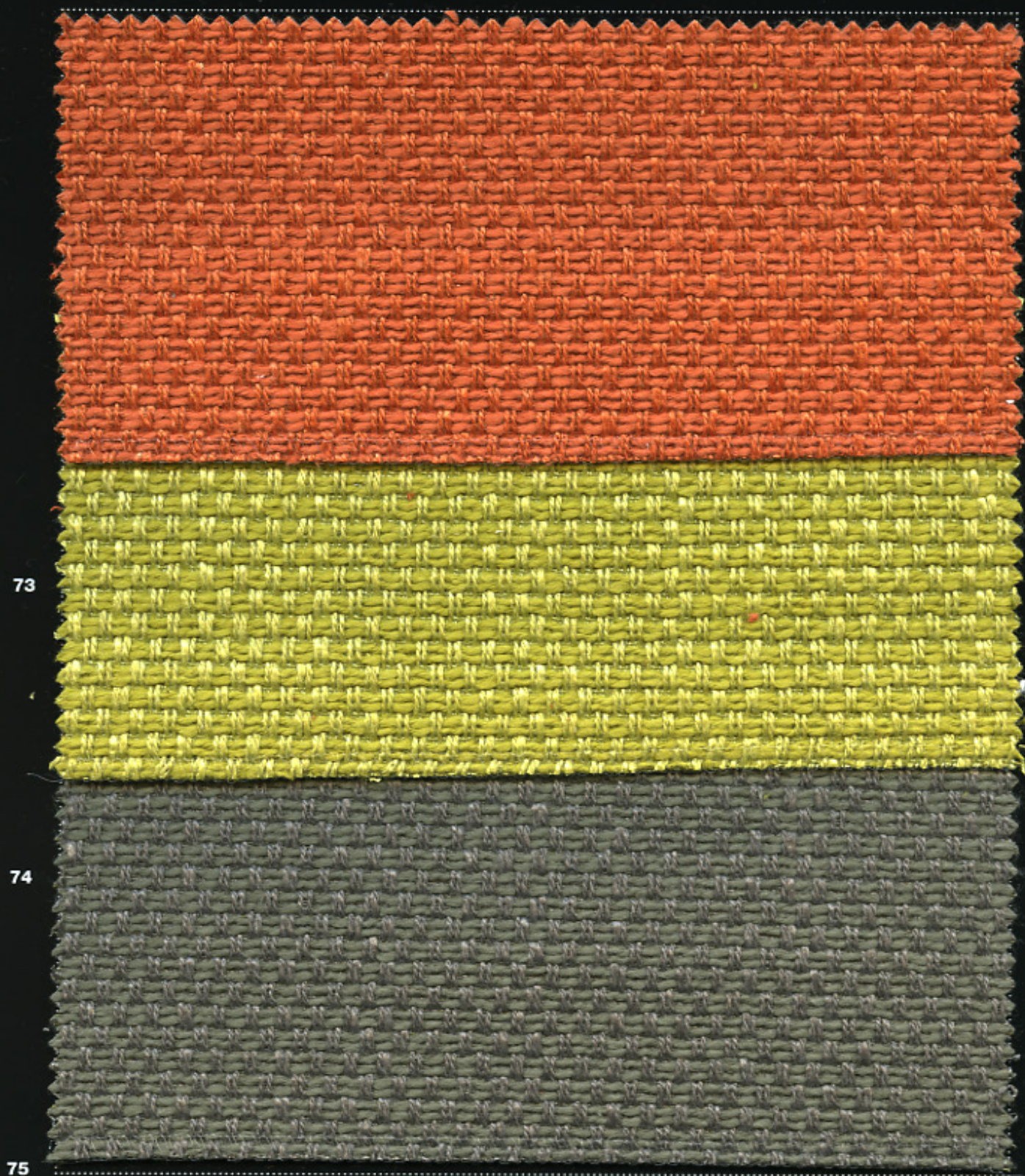


70 BIANCO / WHITE / BLANC / BLANCO 71 ECRÙ / ECRU / ÉCRU / CRUDO 72 TORTORA / DOVE / TOURTERELLE / TORTOLA

POP DUO & PLASTICS DUO

NILO FABRICS

Kartell



73 ARANCIO / ORANGE / ORANGE / NARANJA 74 VERDE / GREEN / VERT / VERDE 75 GRIGIO / GREY / GRIS / GRIS

POP DUO & PLASTICS DUO

NILO FABRICS

COMPOSIZIONE / COMPOSITION / COMPOSITION / COMPOSICIÓN

46% COTONE, 45% VISCOSA, 8% LINO, 1% SETA / 46% COTTON, 45% VISCOSE, 8% LINEN, 1% SILK / 46% COTON, 45% VISCOSE, 8% LIN, 1% SOIE / 46% ALGODÓN, 45% VISCOSA, 8% LINO, 1% SEDA

RESISTENZA ALL'ABRASIONE (CICLI) / ABRASION RESISTANCE (RUBS) / RÉSISTANCE À L'ABRASION (TOURS) / RESISTENCIA A LA ABRASIÓN (CICLOS)

20.000 MARTINDALE

SOLIDITÀ DEL COLORE ALLA LUCE / LIGHT FASTNESS / SOLIDITÉ À LA LUMIÈRE

RESISTENCIA DEL COLOR A LA LUZ

5

SOLIDITÀ DEL COLORE ALLO SFREGAMENTO / FASTNESS TO RUBBING / SOLIDITÉ AU FROTTEMENT

RESISTENCIA DEL COLOR A LA FRICCIÓN

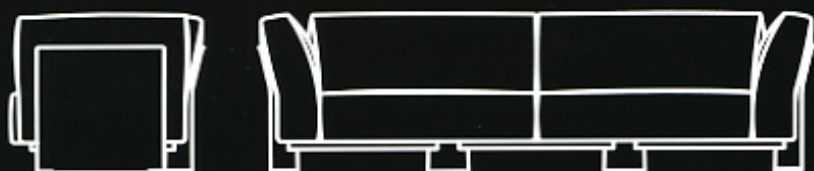
CROCKMETER 4/5 UNI EN ISO 105-X12

MANUTENZIONE E LAVAGGIO / CLEANING AND WASHING / NETTOYAGE ET LAVAGE / MANTENIMIENTO Y LAVADO



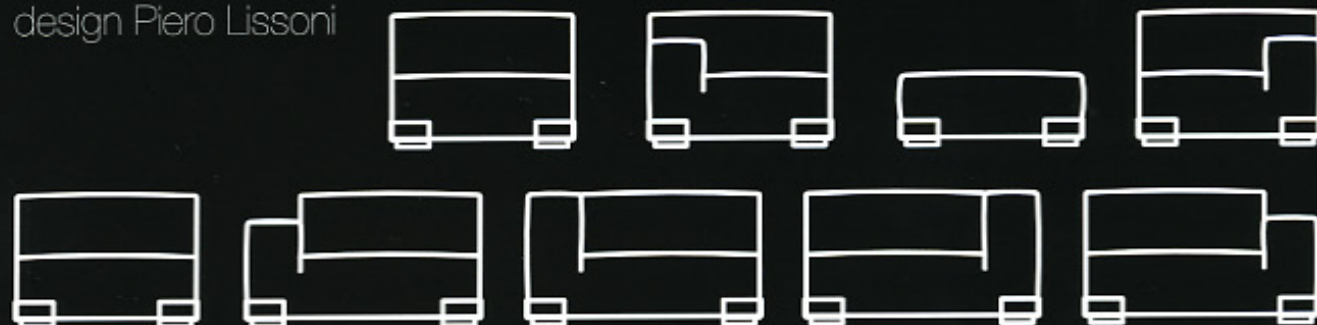
POP DUO

design Piero Lissoni con Carlo Tamborini



PLASTICS DUO

design Piero Lissoni



KARTELL NON GARANTISCE LA STESSA TONALITÀ DI COLORE TRA I DIVERSI LOTTI DI PRODUZIONE / KARTELL DOES NOT GUARANTEE THAT THE COLOURS BETWEEN THE DIFFERENT LOTS OF PRODUCTION WILL BE THE SAME
KARTELL NE GARANTIT PAS LA MÊME TONALITE DE COULEUR ENTRE LES DIFFÉRENTS LOTS DE PRODUCTION
KARTELL NO GARANTIZA LA MISMA TONALIDAD DE COLOR DE LOS DISTINTOS LOTES DE PRODUCCIÓN.