

Catifa 46 / Bar stool h 76

Design by Lievore Altherr Molina, 2004

Art. 0483: Stool with sled base and shell upholstered

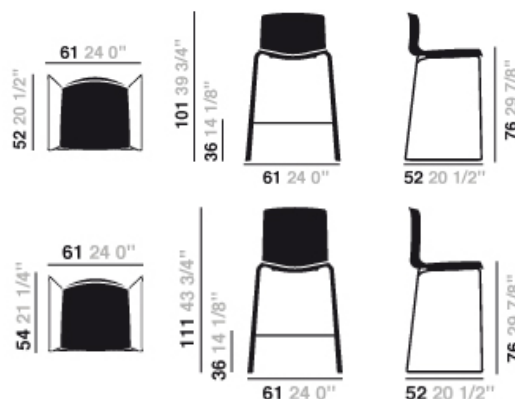
Art. 0473: Stool with sled base and shell upholstered with high backrest

Stool with chromed steel sled base and polypropylene shell upholstered in leather, faux leather, fabric or customer's fabric. Seat height 76 cm - 29 7/8". Glides for wooden floors available upon request.



√clip.it.easy®

Dimensions*



* Files CAD 2D - 3D available for download at www.arper.com

Shipment details

	kg	m ³	lb	ft ³
Art. 0483				
1 PCS = 2 boxes	12.20	0.338	26.840	11.936
4 PCS = 2 boxes	41.50	0.448	91.300	15.820
Art. 0473				
1 PCS = 2 boxes	13.00	0.371	28.600	13.101
4 PCS = 2 boxes	45.00	0.488	99.000	17.233

Base finishes



CRO
Chrome
finish steel

Stacking options

Art. 0483 with stacking glide
FABRIC: up to 8 pcs. - LEATHER: up to 5 pcs.
FABRIC: up to 8 pcs. - LEATHER: up to 5 pcs.

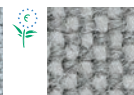
Art. 0473 with stacking glide
FABRIC: up to 5 pcs. - LEATHER: up to 5 pcs.
FABRIC: up to 5 pcs. - LEATHER: up to 5 pcs.

Materials

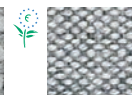
Fabric by kvadrat e No Stain



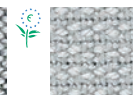
Topas 2
67 colors



Hallingdal 65
58 colors



Remix 2
49 colors



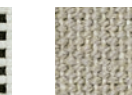
Cava 3
49 colors



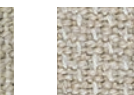
Flora 2
33 colors



Pro 2
35 colors



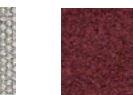
Lazio 2
28 colors



Clara
28 colors



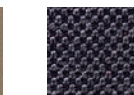
Tempo
22 colors



Divina MD
27 colors



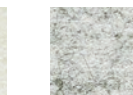
Scuba
24 colors



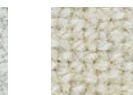
No Stain
34 colors



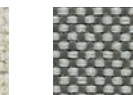
Divina 3
56 colors



Divina
Melange 2
24 colors



Tonus 3
64 colors



Field
24 colors



Steelcut
Trio 2
49 colors



Sunniva
12 colors



Steelcut 2
37 colors

Faux leather, Soft leather and chrome free leather by elmo.



PI
Faux
leather
52 colors



PF
Pelle Fiore
13 colors



ES
Pelle
Elmosoft®
60 colors

Catifa 46 / Bar stool h 76

Design by Lievore Altherr Molina, 2004

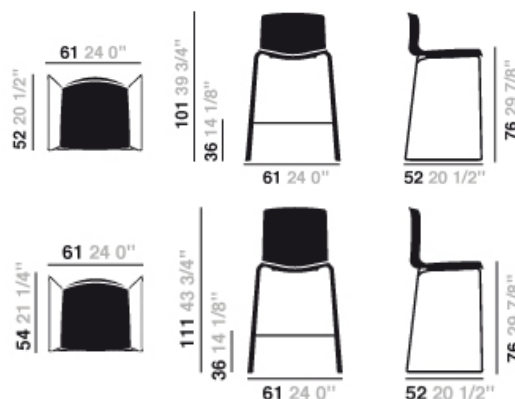
Art. 0481: Stool with sled base and shell upholstered h 76 cm
 Art. 0471: Stool with sled base and shell upholstered h 76 cm with high backrest

Stool with chromed steel sled base and polypropylene shell upholstered in hard leather grade 1 or hard leather grade 2. Seat height 76 cm - 29 7/8". Glides for wooden floors available upon request.



√clip.it.easy®

Dimensions*



* Files CAD 2D - 3D available for download at www.arper.com

Shipment details

	kg	m ³	lb	ft ³
Art. 0481				
1 PCS = 2 boxes	12.20	0.338	26.840	11.936
4 PCS = 2 boxes	41.50	0.448	91.300	15.820
Art. 0471				
1 PCS = 2 boxes	11.70	0.349	25.740	12.324
4 PCS = 2 boxes	39.00	0.432	85.800	15.255

Base finishes



CRO
 Chrome
 finish steel

Materials

Polypropylene



PO
 Polypropylene
 9 colors



PO
 Polypropylene
 two colors
 9 colors

Hard leather



CU
 Hard leather
 grade 1
 4 colors



CT
 Hard leather
 grade 2
 13 colors

Stacking options

Art. 0481 with stacking glide
 up to 5 pcs.
 up to 5 pcs.

Art. 0471 with stacking glide
 PO: fino a 10 PCS - CU and CT: up to 5 pcs.
 PO: fino a 10 PCS - CU and CT: up to 5 pcs.

Catifa 46 / Bar stool h 76

Design by Lievore Altherr Molina, 2004

Art. 0571: Stool with sled base and wood shell h 76 cm

Stool with chromed steel sled base and wood shell available in three colors (natural oak, bleached oak, wengé).

Seat height 76 cm - 29 7/8".

Glides for wooden floors available upon request.



clip.it.easy

Dimensions*



* Files CAD 2D - 3D available for download at www.arper.com

Shipment details

Art. 0571	kg	m ³	lb	ft ³
1 PCS = 2 boxes	10.90	0.347	23.980	12.250
4 PCS = 2 boxes	35.82	0.444	78.804	15.679

Base finishes



CRO
Chrome
finish steel

Stacking options

Art. 0571 with stacking glide
fino a 10 PCS
fino a 10 PCS

Materials

Wood



L
Wood
3 colors

Catifa 46 / Bar stool h 76

Design by Lievore Altherr Molina, 2004

Art. 0478: Stool with sled base and shell upholstered

Stool with chromed steel sled base and polypropylene shell with leather, faux leather, fabric or customer's fabric upholstery applied to the seat surface. Seat height 76 cm - 29 7/8". Glides for wooden floors available upon request.



√clip.it.easy®

Dimensions*



* Files CAD 2D - 3D available for download at www.arper.com

Shipment details

Art. 0478	kg	m ³	lb	ft ³
1 PCS = 2 boxes	14.40	0.378	31.680	13.348
4 PCS = 2 boxes	46.44	0.496	102.168	13.348

Base finishes



CRO
Chrome
finish steel

Stacking options

Art. 0478 with stacking glide
FABRIC: up to 8 pcs. - LEATHER: up to 5 pcs.
FABRIC: up to 8 pcs. - LEATHER: up to 5 pcs.

Materials

Polypropylene

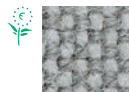


PO
Polypropylene
9 colors

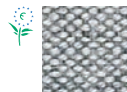
Fabric by kvadrat e No Stain



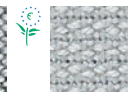
Topas 2
67 colors



Hallingdal 65
58 colors



Remix 2
49 colors



Cava 3
49 colors



Flora 2
33 colors



Pro 2
35 colors



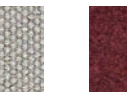
Lazio 2
28 colors



Clara
28 colors



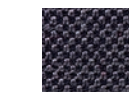
Tempo
22 colors



Divina MD
27 colors



Scuba
24 colors



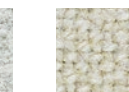
No Stain
34 colors



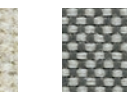
Divina 3
56 colors



Divina
Melange 2
24 colors



Tonus 3
64 colors



Field
24 colors



Steelcut
Trio 2
49 colors



Sunniva
12 colors



Steelcut 2
37 colors

Faux leather, Soft leather and chrome free leather by elmo.



PI
Faux
leather
52 colors



PF
Pelle Fiore
13 colors



ES
Pelle
Elmosoft®
60 colors

Catifa 46 / Bar stool h 76

Design by Lievore Altherr Molina, 2004

Art. 0305: Stool with sled base and upholstered cushion

Stool with chromed steel sled base and polypropylene shell with cushion upholstered in leather, faux leather, fabric or customer's fabric applied to the seat surface. Seat height 76 cm - 29 7/8". Glides for wooden floors available upon request.



clip.it.easy®

Dimensions*



* Files CAD 2D - 3D available for download at www.arper.com

Shipment details

Art. 0305	kg	m ³	lb	ft ³
1 PCS = 2 boxes	11.70	0.349	25.74	13.324
4 PCS = 2 boxes	39.00	0.432	85.80	15.255

Base finishes



CRO
Chrome
finish steel

Stacking options

Art. 0305 with stacking glide
FABRIC: up to 8 pcs. - LEATHER: up to 5 pcs.
FABRIC: up to 8 pcs. - LEATHER: up to 5 pcs.

Materials

Polypropylene



PO
Polypropylene
9 colors



PO
Polypropylene
two colors
9 colors

Fabric by kvadrat e No Stain



Topas 2
67 colors



Hallingdal 65
58 colors



Remix 2
49 colors



Cava 3
49 colors



Flora 2
33 colors



Pro 2
35 colors



Lazio 2
28 colors



Clara
28 colors



Tempo
22 colors



Divina MD
27 colors



Scuba
24 colors



No Stain
34 colors



Divina 3
56 colors



Divina
Melange 2
24 colors



Tonus 3
64 colors



Field
24 colors



Steelcut
Trio 2
49 colors



Sunniva
12 colors



Steelcut 2
37 colors

Faux leather, Soft leather and chrome free leather by elmo.



PI
Faux
leather
52 colors



PF
Pelle Fiore
13 colors



ES
Pelle
Elmosoft®
60 colors

Catifa 46 / Bar stool h 76

Design by Lievore Altherr Molina, 2004



1



2



3



4



5



6



7

arper

- 1 Cushion
- 2 Polycarbonate glide with polyurethane insert
- 3 Polycarbonate glide with felt insert
- 4 Stacking glide
- 5 Trolley
- 6 Stacking protection pad
- 7 Stacking protection pad and link

F +39 0422 791800

T +39 0422 7918

www.arper.com

Catifa 46 / Bar stool h 76

Design by Lievore Altherr Molina, 2004

Fire retardant test

UK CONTRACT: BS7176-07 Medium Hazard: Fabric (Flora 2, Pro 2, Tonus 3, Topas 2, Hallingdal 65). Elmosoft, Faux leather. BS7176-07 Low Hazard: Soft leather. Faux leather. Fabric (Orange 2, Divina 3, Divina Melange 2, Divina MD). UK DOMESTIC: BS5852-1 Sch.4-5 Part1: Faux leather. Soft leather, Elmosoft. Fabric (Flora 2, Divina 3, Divina Melange 2, Divina MD, Hallingdal 65, Tonus 3, Topas 2). BS5852-1 Sch. 4 Part1: Fabric (Pro 2). USA Technical Bulletin 117: Fabric. Faux leather.



Resistance test

Art.0483

EN 1728/2000 - EN 15373:2007 6.4 3°
 EN 1728/2000 - EN 15373:2007 6.12 3°
 EN 1728/2000 - EN 15373:2007 06:13 3°
 EN 1728/2000 - EN 15373:2007 A - A.5 3°

Art.0473

ANSI-BIFMA X5.1-2002 12
 EN 1728/2000 - EN 15373:2007 6.2.1 3°
 EN 1728/2000 - EN 15373:2007 6.2.2 3°
 EN 1728/2000 - EN 15373:2007 6.4 3°
 EN 1728/2000 - EN 15373:2007 6.7 3°
 EN 1728/2000 - EN 15373:2007 6.8 3°
 EN 1728/2000 - EN 15373:2007 6.12 3°
 EN 1728/2000 - EN 15373:2007 06:13 3°
 EN 1728/2000 - EN 15373:2007 A - A.53°



UK DOMESTIC: BS5852-1 Sch.5 Part1: Hard leather grade 1 and 2. BS5852/90 Sez.5 cigarette match: Polypropylene.



Art.0481

EN 1728/2000 - EN 15373:2007 6.4 3°
 EN 1728/2000 - EN 15373:2007 6.12 3°
 EN 1728/2000 - EN 15373:2007 06:13 3°
 EN 1728/2000 - EN 15373:2007 A-A.5 3°

Art.0471

ANSI-BIFMA X5.1-2002 12
 EN 1728/2000 - EN 15373:2007 6.2.1 3°
 EN 1728/2000 - EN 15373:2007 6.2.2 3°
 EN 1728/2000 - EN 15373:2007 6.4 3°
 EN 1728/2000 - EN 15373:2007 6.7 3°
 EN 1728/2000 - EN 15373:2007 6.8 3°
 EN 1728/2000 - EN 15373:2007 6.12 3°
 EN 1728/2000 - EN 15373:2007 06:13 3°
 EN 1728/2000 - EN 15373:2007 A - A.5 3°



UK DOMESTIC: BS5852/90 Sez.5 cigarette match



Art.0571

EN 1022/05
 EN 1728/2000 - EN 15373:2007 6.2.1 3°
 EN 1728/2000 - EN 15373:2007 6.2.2 3°
 EN 1728/2000 - EN 15373:2007 6.4 3°
 EN 1728/2000 - EN 15373:2007 6.7 3°
 EN 1728/2000 - EN 15373:2007 6.8 3°
 EN 1728/2000 - EN 15373:2007 6.12 3°
 EN 1728/2000 - EN 15373:2007 06:13 3°
 EN 1728/2000 - EN 15373:2007 6.15 3°
 EN 1728/2000 - EN 15373:2007 6.16 3°
 EN 1728/2000 - EN 15373:2007 A - A.5 3°



UK CONTRACT: BS7176-07 Medium Hazard: Fabric (Flora 2, Pro 2, Tonus 3, Topas 2, Hallingdal 65). Elmosoft, Faux leather. BS7176-07 Low Hazard: Soft leather. Faux leather. Fabric (Orange 2, Divina 3, Divina Melange 2, Divina MD). UK DOMESTIC: BS5852-1 Sch.4-5 Part1: Faux leather. Soft leather, Elmosoft. Fabric (Flora 2, Divina 3, Divina Melange 2, Divina MD, Hallingdal 65, Tonus 3, Topas 2). BS5852-1 Sch. 4 Part1: Fabric (Pro 2). USA Technical Bulletin 117: Fabric. Faux leather.



Art.0478

EN 1728/2000 - EN 15373:2007 6.4 3°
 EN 1728/2000 - EN 15373:2007 6.12 3°
 EN 1728/2000 - EN 15373:2007 06:13 3°
 EN 1728/2000 - EN 15373:2007 A - A.5 3°



UK CONTRACT: BS7176-07 Medium Hazard: Fabric (Flora 2, Pro 2, Tonus 3, Topas 2, Hallingdal 65). Elmosoft, Faux leather. BS7176-07 Low Hazard: Soft leather. Faux leather. Fabric (Orange 2, Divina 3, Divina Melange 2, Divina MD). UK DOMESTIC: BS5852-1 Sch.4-5 Part1: Faux leather. Soft leather, Elmosoft. Fabric (Flora 2, Divina 3, Divina Melange 2, Divina MD, Hallingdal 65, Tonus 3, Topas 2). BS5852-1 Sch. 4 Part1: Fabric (Pro 2). USA Technical Bulletin 117: Fabric. Faux leather.



Art.0305

EN 1728/2000 - EN 15373:2007 6.2.1 3°
 EN 1728/2000 - EN 15373:2007 6.2.2 3°
 EN 1728/2000 - EN 15373:2007 6.4 3°
 EN 1728/2000 - EN 15373:2007 6.7 3°
 EN 1728/2000 - EN 15373:2007 6.8 3°
 EN 1728/2000 - EN 15373:2007 6.12 3°
 EN 1728/2000 - EN 15373:2007 06:13 3°
 EN 1728/2000 - EN 15373:2007 A - A.5 3°



arper

F +39 0422 791800

T +39 0422 7918

www.arper.com

* For more information on product's certification and environment documents visit www.arper.com or contact us at environment@arper.com